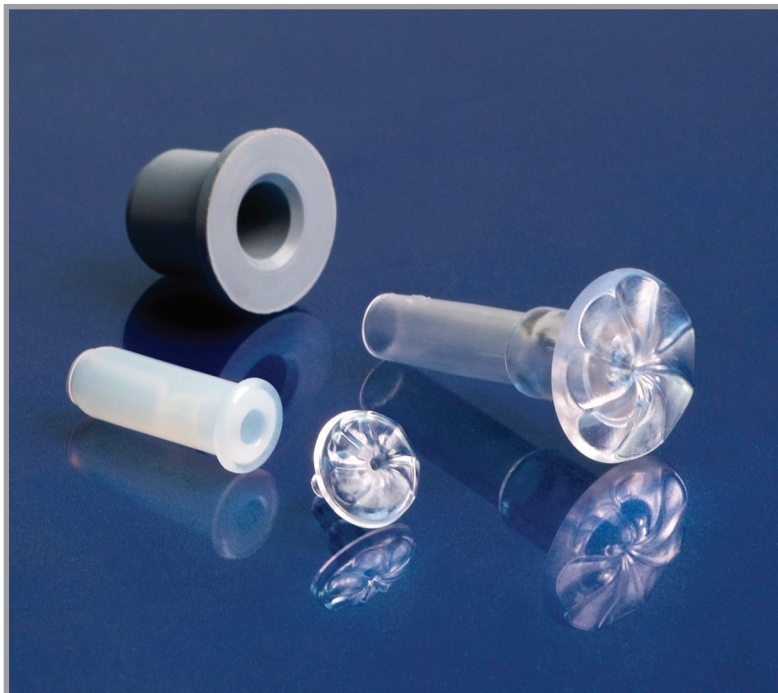


Spot Lighting Made Simple!

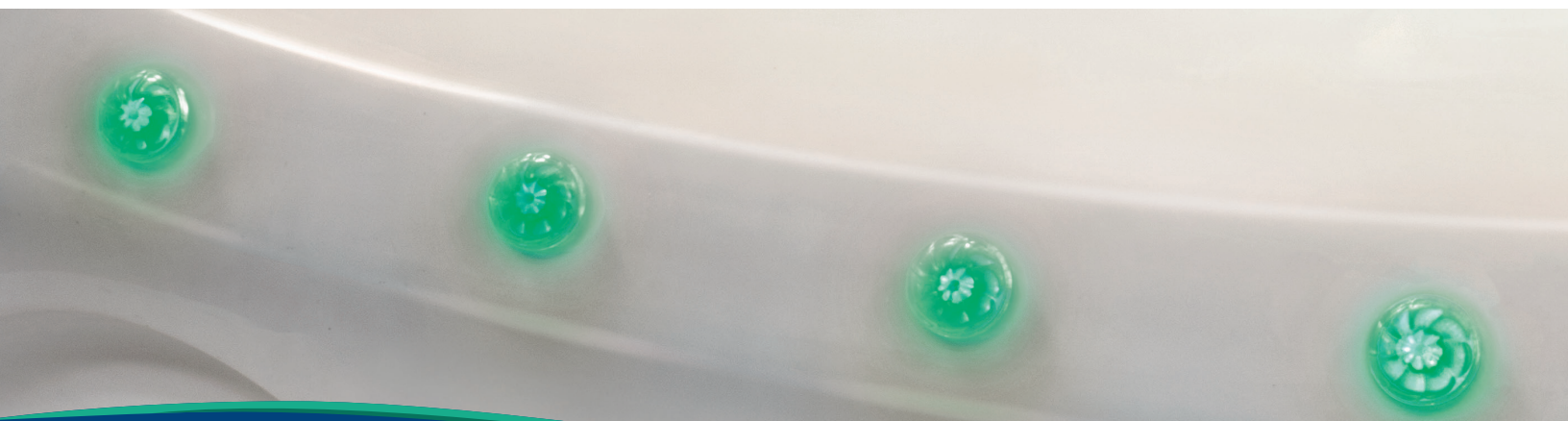


Installation is as easy as it gets!
Just drill the hole, press in the
SGMS grommet and press in one
of the different spot light lenses.
No need for silicone, threading on
a nut or spot facing.

Features:

- Ultra-easy to install
- Multiple lenses to choose from
- Light is diffused evenly
- Accepts most LED lights
- **Made in America!**

Patent Pending



5/8" 3/4" & 1" Pin Lights



Specifications:

- 5/8", 3/4" & 1" Outside Diameters
- Silicone & EPDM Grommets
- Clear Polyester Lens
- 5/8" Hole Saw Size
W Drill (0.386") for acrylic/fiberglass
- 3/4" Hole Saw Size
0.386" Decco Drill from Phillips Carbide
for acrylic/fiberglass
- 1" Hole Saw Size
43/64" for acrylic/fiberglass



pinwheel



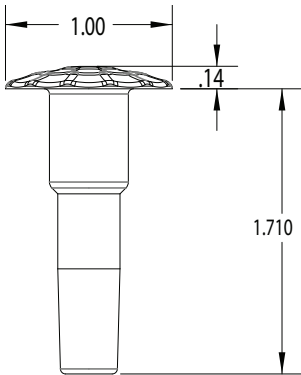
sunburst



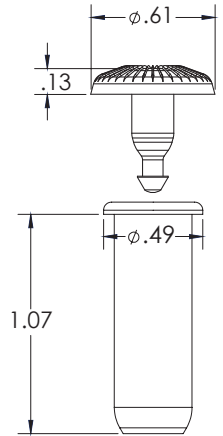
ripple



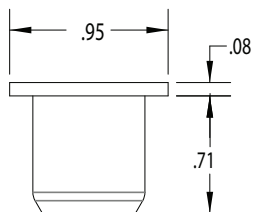
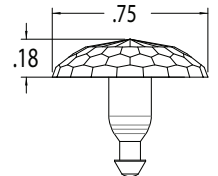
petal



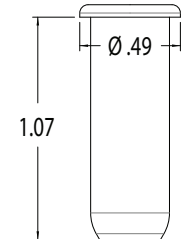
5/8" Pin Lights		case qty.
633-8028	5/8" SGMS LED Spot Light (Ripple) Assy	2,500
633-8018	5/8" SGMS LED Spot Light (Pinwheel) Assy	2,500
633-8008	5/8" SGMS LED Spot Light (Sunburst) Assy	2,500



3/4" Pin Lights		case qty.
633-5008	3/4" SGMS LED Spot Light (Petal) Assy	2,500



1" Pin Lights		case qty.
633-3038	1" SGMS LED Spa Pin Light (Ripple) Assy	2,500
633-3018	1" SGMS LED Spa Pin Light (Pinwheel) Assy	2,500
633-3028	1" SGMS LED Spot Light (Sunburst) Assy	2,500
633-3008	1" SGMS LED Spot Light (Faceted) Assy	2,500



waterway™

